

MARCH 14, 2017: WINTER STORM

FORECAST FOR CENTRAL PENNSYLVANIA

PREPARED BY: MATT STEINBUGL

PREPARED: TUESDAY, MARCH 14, 2017 @ 6:00AM EDT

Important Note: Local Level briefings are designed to provide detailed weather information for those counties served by NWS State College only (highlighted above). Remember, this briefing contains static information gathered at the time the briefing was prepared. The latest forecasts and warnings should be obtained from www.weather.gov/ctp.



Hazardous Weather



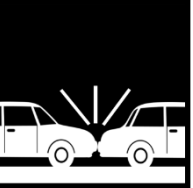
Heavy Snow
 Snow rates 1-2 in/hr

Most Likely Timing

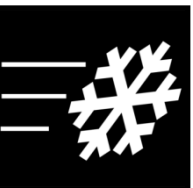


Heaviest: 6am-12pm
End: 2pm-5pm

Impacts



Dangerous Travel
Impassable Roads



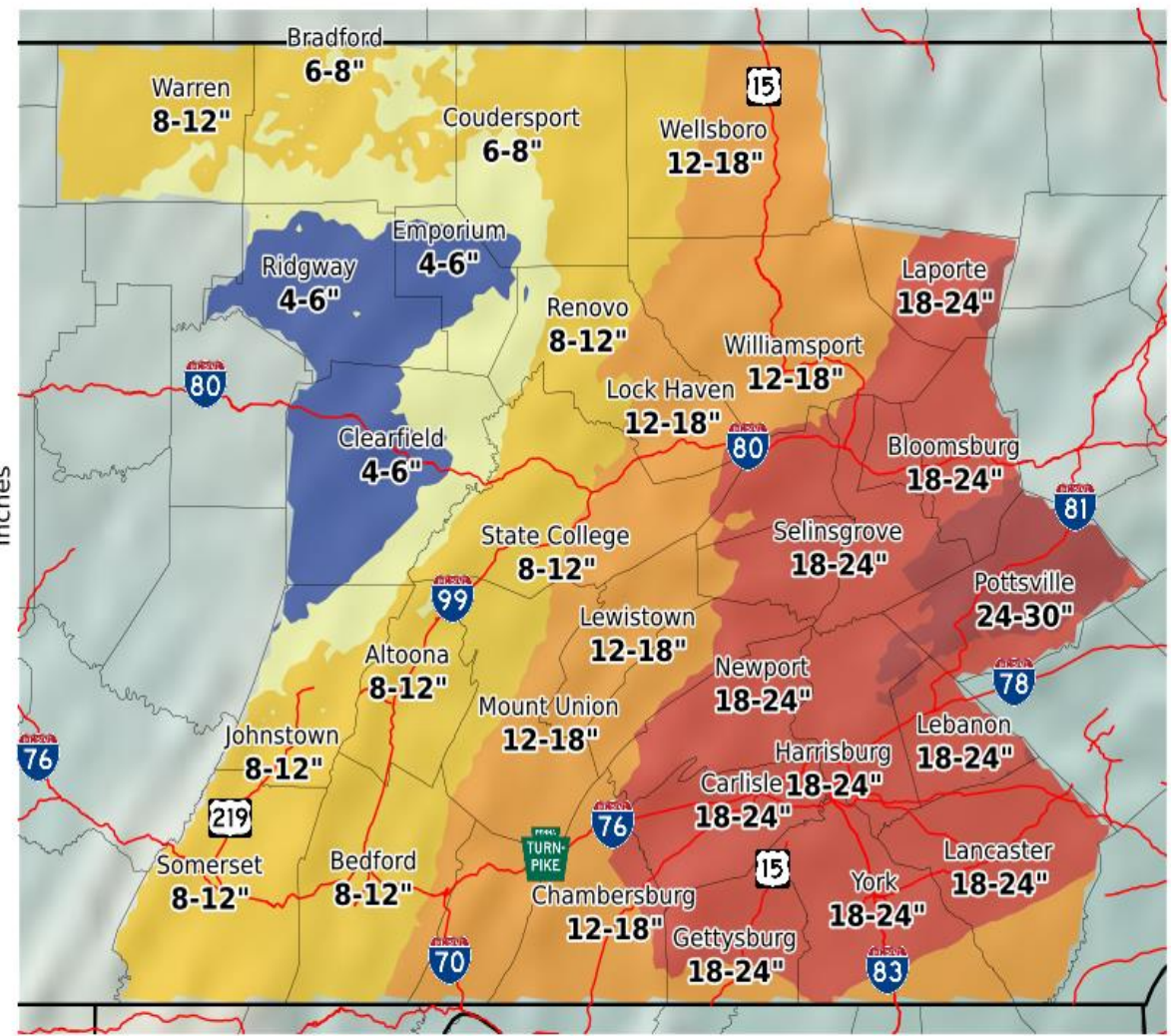
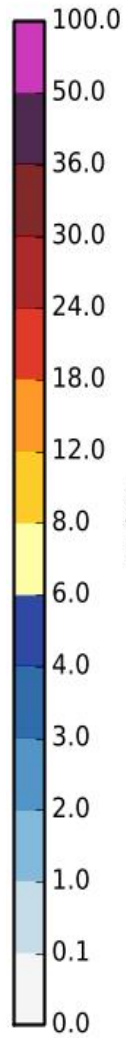
Blowing Snow
Near-blizzard
Conditions



Significant Drifting

Most Likely Snowfall

Valid: 03/14/2017 05:00 AM - 03/15/2017 08:00 AM



Review winter weather safety & preparedness information: weather.gov/winter

Monitor updates:
weather.gov/ctp/winter

Additional Information: March 14 Winter Storm

- * Snowfall rates 1-2 in/hr likely over the mid-lower Susquehanna Valley this morning
 - Maximum snow rates 3+ inches per hour possible with thundersnow (I-81 corridor)
 - Heavy snow and wind gusts 25-35 mph will produce near-blizzard conditions
 - Mix of snow/sleet could cut down on accumulations
- * Blowing and significant drifting snow with increasing winds into Wednesday
- * Very Dangerous driving conditions with travel restrictions and some roads impassable
- * Power outages and widespread delays and cancellations

PREPAREDNESS ACTIONS

- * Monitor local forecasts: weather.gov/ctp | weather.gov/ctp/winter
- * Winter weather safety & preparedness information: weather.gov/winter | ReadyPA.gov
- * Check road conditions and travel information: www.511pa.com